

We're here for you **Hawai'i**



Find assistance with housing and shelter, utilities, food, healthcare, mental health, substance abuse, employment, legal & financial aid, as well as support and care programs for keiki and kūpuna.



Caring experts are waiting to connect you with more than 4,400 local programs, services, and resources



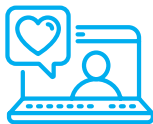
Dial 2-1-1 (or 808-ASK-2000) to speak with a live Community Resource Specialist



Interpretation services available in more than 180 languages



Text us at 877-275-6569



Search the resource database, available 24/7 on AUW211.org



Email us for support at info211@auw.org



Free. Confidential.
Call. Text. Chat 7 a.m.-10 p.m. Mon-Sun
Search anytime on AUW211.org